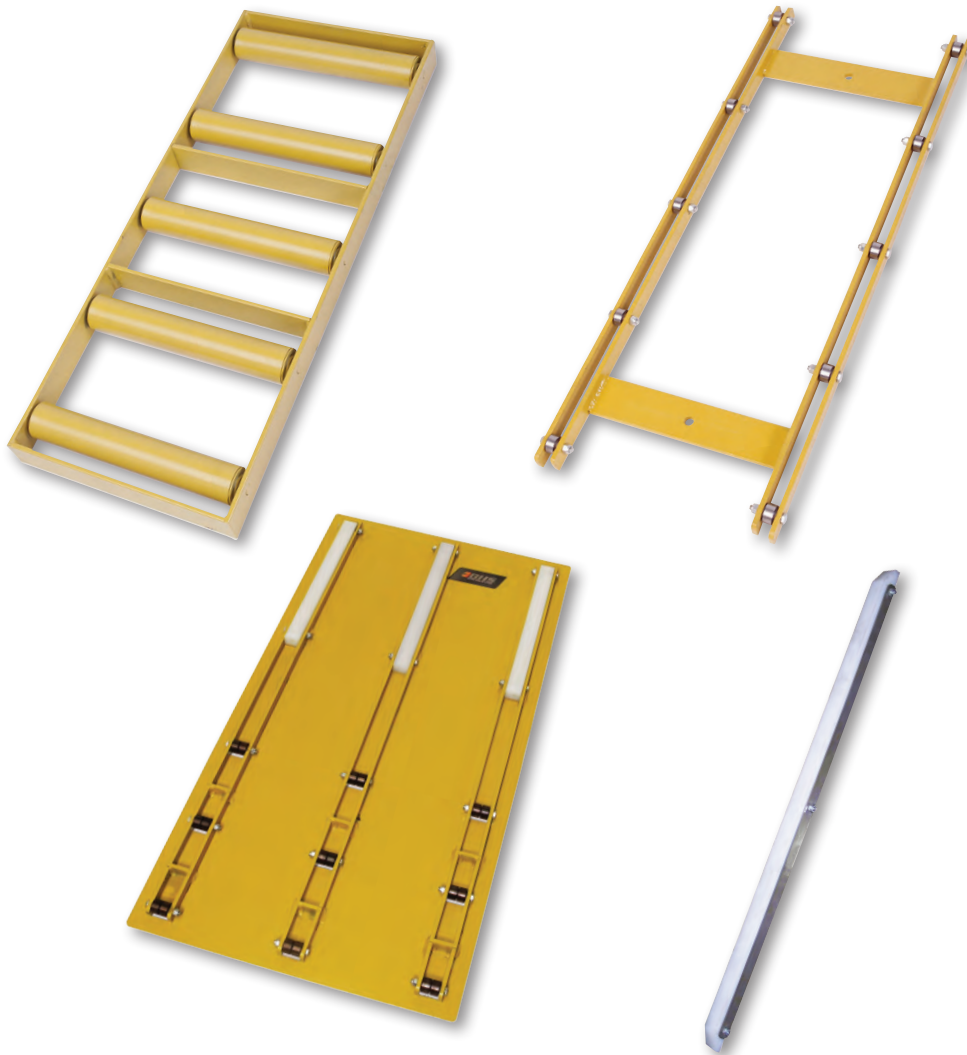


Accessories
Compartment Roller Trays



BHS Compartment Roller Trays are engineered to assist in converting a forklift battery compartment from overhead extraction to side extraction.

Accessories

Compartment Roller Trays

BHS Compartment Roller Trays are manufactured for ease and efficiency. Heavy duty construction ensures reliability, and a wide range of models are available to suit a variety of needs. Custom sizes and designs are available upon request.

Compartment Roller Tray

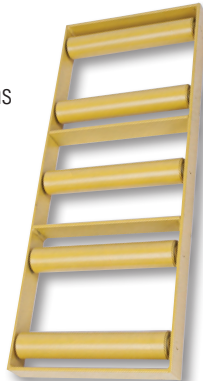
- 2 3/16" (56 mm) standard height;
30" (762 mm) length
- Other sizes built to your specifications

Available Models

CRT-7: 7" (178 mm) overall width

CRT-12: 12" (305 mm) overall width

CRT-16: 16" (406 mm) overall width



CRT

CRT-Low Profile

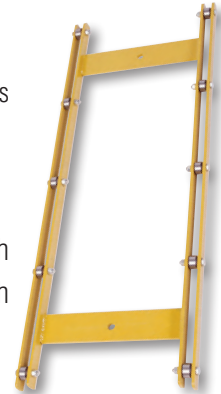
- 1" (25 mm) standard height;
30" (762 mm) length
- Other sizes built to your specifications

Available Models

CRTL-7: 7" (178 mm) overall width

CRTL-12: 12" (305 mm) overall width

CRTL-16: 16" (406 mm) overall width



CRTL

CRT-Low Profile Plate Mount

- CRTL-PM models save space in tight battery compartments
- Utilize plate frame to easily drop into battery compartment

Available Models

CRTL-20X38PM: 20" x 38" (508 mm x 965 mm) Plate Mount

CRTL-26X38PM: 26" x 38" (660 mm x 965 mm) Plate Mount

CRTL-30X38PM: 30" x 38" (762 mm x 965 mm) Plate Mount

CRTL-32X38PM: 32" x 38" (813 mm x 965 mm) Plate Mount

CRTL-34X38PM: 34" x 38" (864 mm x 965 mm) Plate Mount



CRTL-PM

Compartment Slide Strip

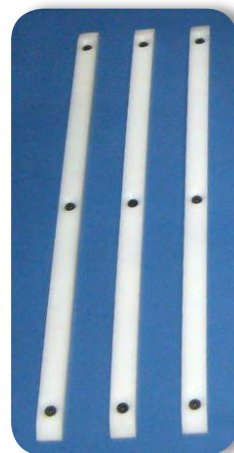
- CSS models bolt into the forklift truck's battery compartment
- CSS-W models weld into the forklift truck's battery compartment

Available Models

CSS: 38 1/2" (978 mm) length

CSS-30W: 30" (762 mm) length

CSS-38W: 38" (965 mm) length



(3) CSS



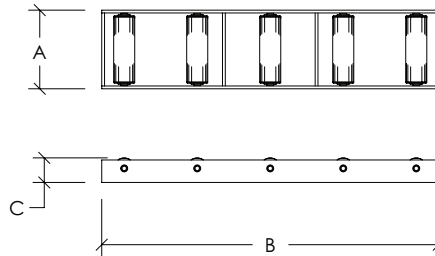
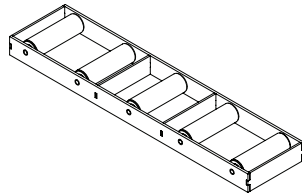
CSS-30W

Product Specifications

Imperial / Metric

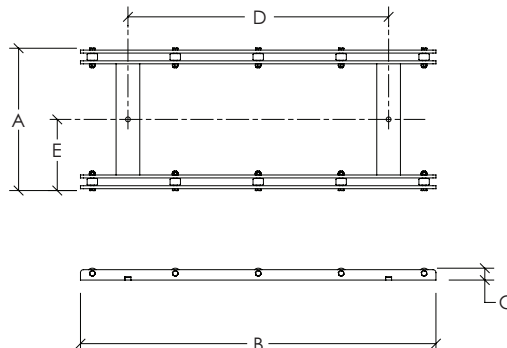
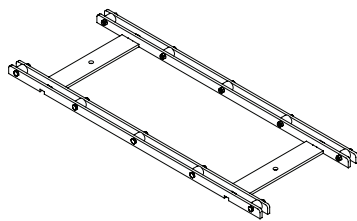
Compartment Roller Tray

	CRT-7	CRT-12	CRT-16
Width (A)	7" / 178 mm	12" / 305 mm	16" / 406 mm
Length (B)	30" / 762 mm	30" / 762 mm	30" / 762 mm
Height (C)	2 3/16" / 56 mm	2 3/16" / 56 mm	2 3/16" / 56 mm
No. of Rollers	5	5	5
Capacity	1,200 lb / 544 kg	1,200 lb / 544 kg	1,400 lb / 635 kg
Color	OSHA Safety Yellow	OSHA Safety Yellow	OSHA Safety Yellow
Roller Material	1 7/8" OD Tube x 13 Ga. Wall 48 mm OD Tube x 2.4 mm Wall	1 7/8" OD Tube x 13 Ga. Wall 48 mm OD Tube x 2.4 mm Wall	1 7/8" OD Tube x 13 Ga. Wall 48 mm OD Tube x 2.4 mm Wall
Frame Material	1/4" x 2" / 6 mm x 51 mm	1/4" x 2" / 6 mm x 51 mm	1/4" x 2" / 6 mm x 51 mm
Mounting Requirement	Drop-in or Tack Weld	Drop-in or Tack Weld	Drop-in or Tack Weld



Compartment Roller Tray-Low Profile

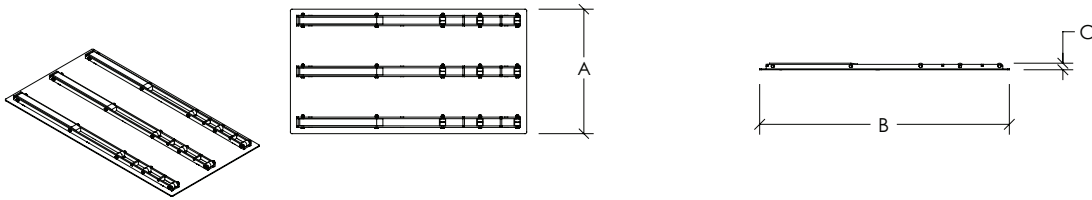
	CRTL-7	CRTL-12	CRTL-16
Width (A)	7" / 178 mm	12" / 305 mm	16" / 406 mm
Length (B)	30" / 762 mm	30" / 762 mm	30" / 762 mm
Height (C)	1" / 25 mm	1" / 25 mm	1" / 25 mm
Mounting Hole Centers (D)	22" / 559 mm	22" / 559 mm	22" / 559 mm
Mounting Hole Centers (E)	3 1/2" / 89 mm	6" / 152 mm	8" / 203 mm
Capacity	2,000 lb / 907 kg	2,000 lb / 907 kg	2,000 lb / 907 kg
Color	OSHA Safety Yellow	OSHA Safety Yellow	OSHA Safety Yellow
No. of Rollers	10	10	10
Frame Material	1/4" x 7/8" & 1/4" x 2" 6 mm x 22 mm & 6 mm x 51 mm	1/4" x 7/8" & 1/4" x 2" 6 mm x 22 mm & 6 mm x 51 mm	1/4" x 7/8" & 1/4" x 2" 6 mm x 22 mm & 6 mm x 51 mm
Roller Diameter	7/8" / 22 mm	7/8" / 22 mm	7/8" / 22 mm
Mounting Hole Size Diameter	13/32" / 10 mm	13/32" / 10 mm	13/32" / 10 mm
Mounting Requirement	Drill / Tap or Tack Weld	Drill / Tap or Tack Weld	Drill / Tap or Tack Weld



Product Specifications cont'd

Compartment Roller Tray-Low Profile Plate Mount

	CRTL-20X38PM	CRTL-26X38PM	CRTL-30X38PM	CRTL-32X38PM	CRTL-34X38PM
Width (A)	20" / 508 mm	26" / 660 mm	30" / 762 mm	32" / 813 mm	34" / 864 mm
Length (B)	38" / 965 mm	38" / 965 mm	38" / 965 mm	38" / 965 mm	38" / 965 mm
Height (C)	1" / 25 mm	1" / 25 mm	1" / 25 mm	1" / 25 mm	1" / 25 mm
No. of Rollers	12	12	18	18	18
Capacity	3,000 lb / 1,361 kg	3,000 lb / 1,361 kg	4,000 lb / 1,814 kg	4,000 lb / 1,814 kg	4,000 lb / 1,814 kg
Color	OSHA Safety Yellow	OSHA Safety Yellow	OSHA Safety Yellow	OSHA Safety Yellow	OSHA Safety Yellow
No. of Slide Strips	2	2	3	3	3
Slide Strip Material	UHMW	UHMW	UHMW	UHMW	UHMW
Roller Diameter	7/8" / 22 mm	7/8" / 22 mm	7/8" / 22 mm	7/8" / 22 mm	7/8" / 22 mm
Frame Material	10 Ga. & 1/4" 3 mm & 6 mm	10 Ga. & 1/4" 3 mm & 6 mm	10 Ga. & 1/4" 3 mm & 6 mm	10 Ga. & 1/4" 3 mm & 6 mm	10 Ga. & 1/4" 3 mm & 6 mm
Mounting Requirement	Not Applicable	Not Applicable	Not Applicable	Not Applicable	Not Applicable



Compartment Slide Strips

	CSS	CSS-30W	CSS-38W
Width (A)	1" / 25 mm	1 15/16" / 49 mm	1 15/16" / 49 mm
Length (B)	38 1/2" / 978 mm	30" / 762 mm	38" / 965 mm
Height (C)	1/2" / 13 mm	1" / 25 mm	1" / 25 mm
Mounting Hole Centers (D)	9" / 229 mm	Not Applicable	Not Applicable
Capacity	1,800 lb per Strip 816 kg per Strip (2 Required)	2,000 lb per Strip 907 kg per Strip (2 Required)	2,000 lb per Strip 907 kg per Strip (2 Required)
Color*	White	White	White
Slide Strip Material	UHMW	UHMW	UHMW
Side Plates	Not Applicable	10 Gauge HRS / 3.4 mm	10 Gauge HRS / 3.4 mm
Hardware Size	1/4-20 x 1/2" (13 mm) Countersunk Hardware	Not Applicable	Not Applicable
Mounting Requirement	Drill / Tap Compartment	Tack Weld Compartment	Tack Weld Compartment

* Side plates unpainted for welding

